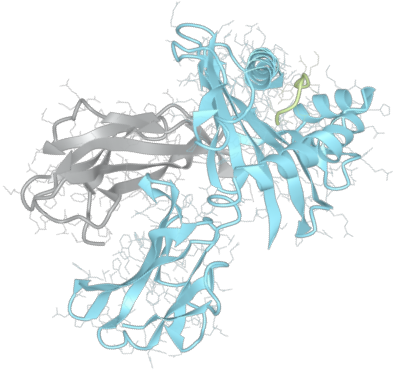


# Product datasheet



## sHLA-C\*04:01

Cw\*04:01, Cw\*0401, C\*0401, C0401  
Cw0401, C\*04, C04, Cw\*04, Cw04, Cw4

|                         |              |
|-------------------------|--------------|
| <b>Serological Name</b> | Cw4          |
| <b>Peptide Load</b>     | Endogenous   |
| <b>Modification</b>     | Unmodified   |
| <b>Conjugation</b>      | Unconjugated |
| <b>SKU</b>              | C0401        |

### Product Description

|  |  |
|--|--|
| <b>Allele Name</b>                         | C*04:01<br>B2m   |
| <b>HLA Class</b>                           | HLA Class I  |
| <b>HLA Gene Locus</b>                      | HLA-C  |
| <b>Alternative Allele Name A Chain</b>     | Cw*04:01, Cw*0401, C*0401, C0401, Cw0401, C*04, C04, Cw*04, Cw04, Cw4  |
| <b>Alternative Allele Name B Chain</b>     | -  |
| <b>Description</b>                         | Recombinant, truncated Class I soluble Human Leukocyte Antigen (sHLA), naturally folded and glycosylated, loaded with endogenous peptides. |
| <b>Serological Name</b>                    | Cw4  |
| <b>Serological Split</b>                   | -  |
| <b>Bw4/Bw6 Assignment</b>                  | -  |
| <b>Bw4/Bw6 Sequence</b>                    | -  |
| <b>Allele Frequency [World Population]</b> |  |
| <b>A chain</b>                             | 10.9%  |
| <b>B chain</b>                             | -  |

### Associated products

[C0401bio](#)  
[C0401pe](#)

## Product Specification

|                                    |   |
|------------------------------------|---|
| <b>Product name</b>                | HLA-C*04:01   |
| <b>HLA Species</b>                 | Human   |
| <b>Host Cell Line Species</b>      | Human   |
| <b>Clone Designation</b>           | B8D9  |
| <b>Tail Specification</b>          | VLDL  |
| <b>Peptide Load</b>                | Endogenous  |
| <b>Modification</b>                | Unmodified  |
| <b>Conjugation</b>                 | Unconjugated  |
| <b>Complexity</b>                  | Monomer   |
| <b>Protein Format</b>              | Recombinant, truncated, soluble, non-modified, non-labeled, endogenously loaded |
| <b>Storage Temperature</b>         | 4 °C (This product should be stored undiluted)                                  |
| <b>Form</b>                        | Liquid  |
| <b>Concentration</b>               | 1000.0 µg/ml  |
| <b>Formulation</b>                 | PBS/0.02% Sodium Azide  |
| <b>pH</b>                          | 7.4   |
| <b>Purification Method</b>         | Affinity Chromatography   |
| <b>Grade</b>                       | Research Use Only [RUO]   |
| <b>Authentication Verification</b> | Sequence Based Typing   |

## Protein Sequences

|                             |   |
|-----------------------------|---|
| <b>Alpha Chain Sequence</b> | GSHSMRYFST SVSWPGRGEP RFIAVGYVDD TQFVRFDSDA ASPRGEPREP WVEQEGPEYW<br>DRETQKYKRQ AQADRVNLRK LRGYYNQSED GSHTLQRMFG CDLGPDGRLR RGYNQFAYDG<br>KDYIALNEDL RSWTAADTAA QITQRKWEAA REAEQRRAYL EGTTCVEWLR R YLENGKETLQ<br>RAEHPKTHVT HHPVSDHEAT LRCWALGFYP AEITLTWQWD GEDQTQDTEL VETRPAGDGT<br>FQKWAAVVVP SGEEQRYTCH VQHEGLPEPL TLRVSVSTDD DLA |
| <b>Beta Chain Sequence</b>  | IQRTPKIQVY SRHPAENGKS NFLNCYVSGF HPSDIEVDLL KNGERIEKVE HSDLSFSKDW<br>SFYLLYYTEF TPTEKDEYAC RVNHVTLSP KIVKWRDRM  |

## Related Products

[C0403](#)  
[A0201](#)  
[A0301](#)  
[B0702](#)

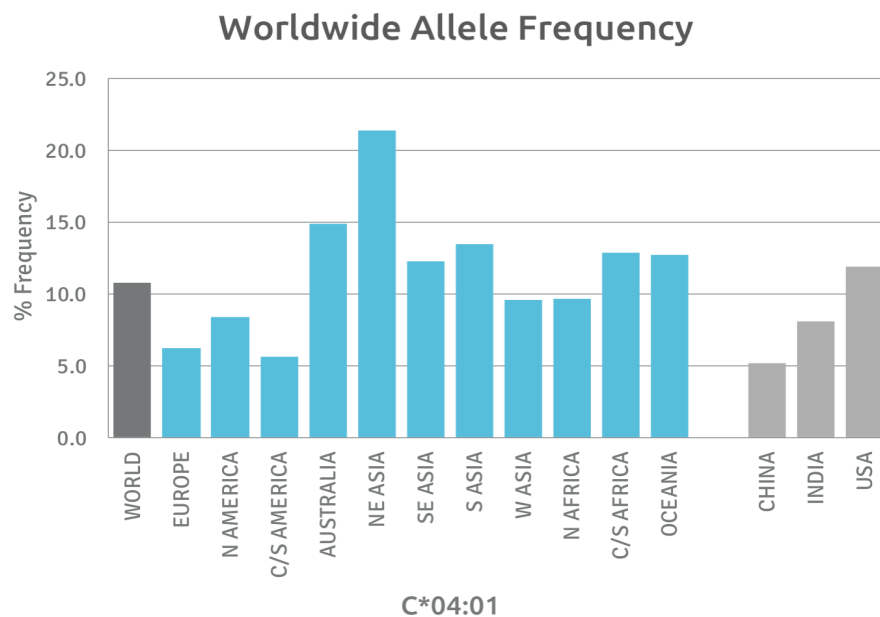
## Applications

HLA Sandwich ELISAs  
HLA Direct ELISAs  
HLA-Sera Antibody Assays  
HLA Controls in ELISA Assays  
HLA Assay Standards  
HLA Blocking Assays  
HLA Neutralizing Assays  
HLA Competition Assays  
HLA Bead Assays  
HLA Immunization Procedures

## Recommended Antibodies

W6/32  
Anti-B2m

## Allele Frequency



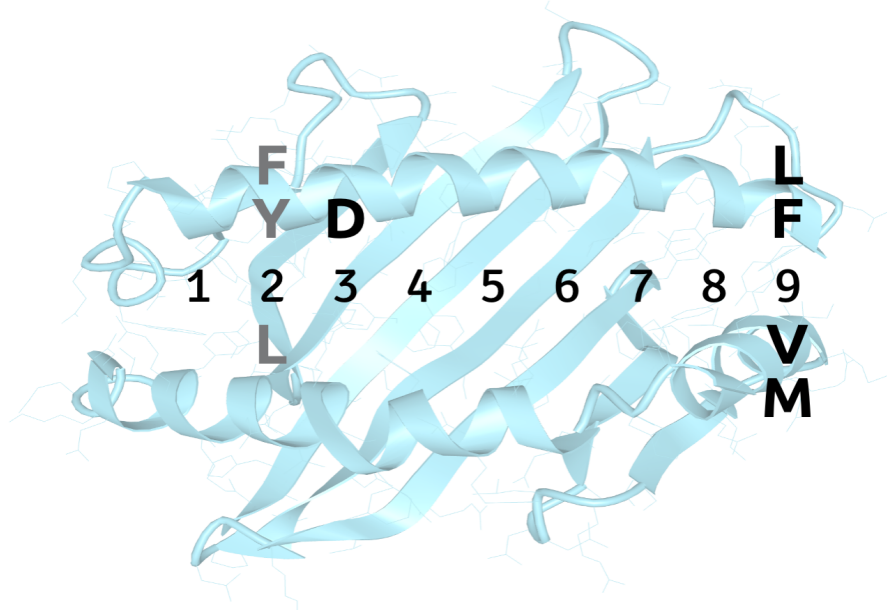
Please note:  
ALL PRODUCTS ARE FOR RESEARCH USE ONLY. NOT FOR COMMERCIAL USE IN DIAGNOSTIC PROCEDURES.  
For more information, please visit our Policies section on our website. For licensing inquiries, please contact

[licensing@hlaprotein.com](mailto:licensing@hlaprotein.com)

 HLA Protein  
PURE PROTEIN, LLC

## Motif

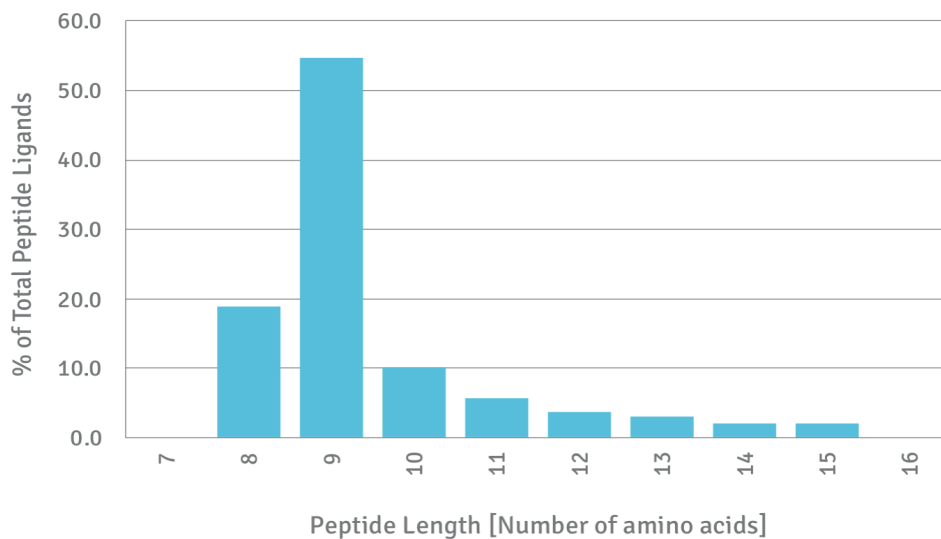
### C\*04:01 BINDING MOTIF



## Length Distribution

### HLA Length Distribution

**C\*04:01**



Please note:

ALL PRODUCTS ARE FOR RESEARCH USE ONLY. NOT FOR COMMERCIAL USE IN DIAGNOSTIC PROCEDURES.

For more information, please visit our Policies section on our website. For licensing inquiries, please contact

[licensing@hlaprotein.com](mailto:licensing@hlaprotein.com)

